

**BIODUR<sup>®</sup>** NATURAL  
DURABILITY

## BIODUR UNIVERSAL ENAMEL



### Application

Used for painting, restoration, decoration on a various surfaces. Perfect for stencil-plates. For indoor and outdoor use.

### Advantages

Makes a strong coat resistant to mechanic and weather exposure. Has high adhesion rate and increased covering capacity. Does not fade out in the sunlight. Colors correspond with European classification RAL.

### Chemical base

Alkyd enamel strengthened with acrylates.

### Spreading capacity

(depending on coat thickness) is — 1.5-2.0 m<sup>2</sup>.

### Drying time

7-10 min at 25°C.

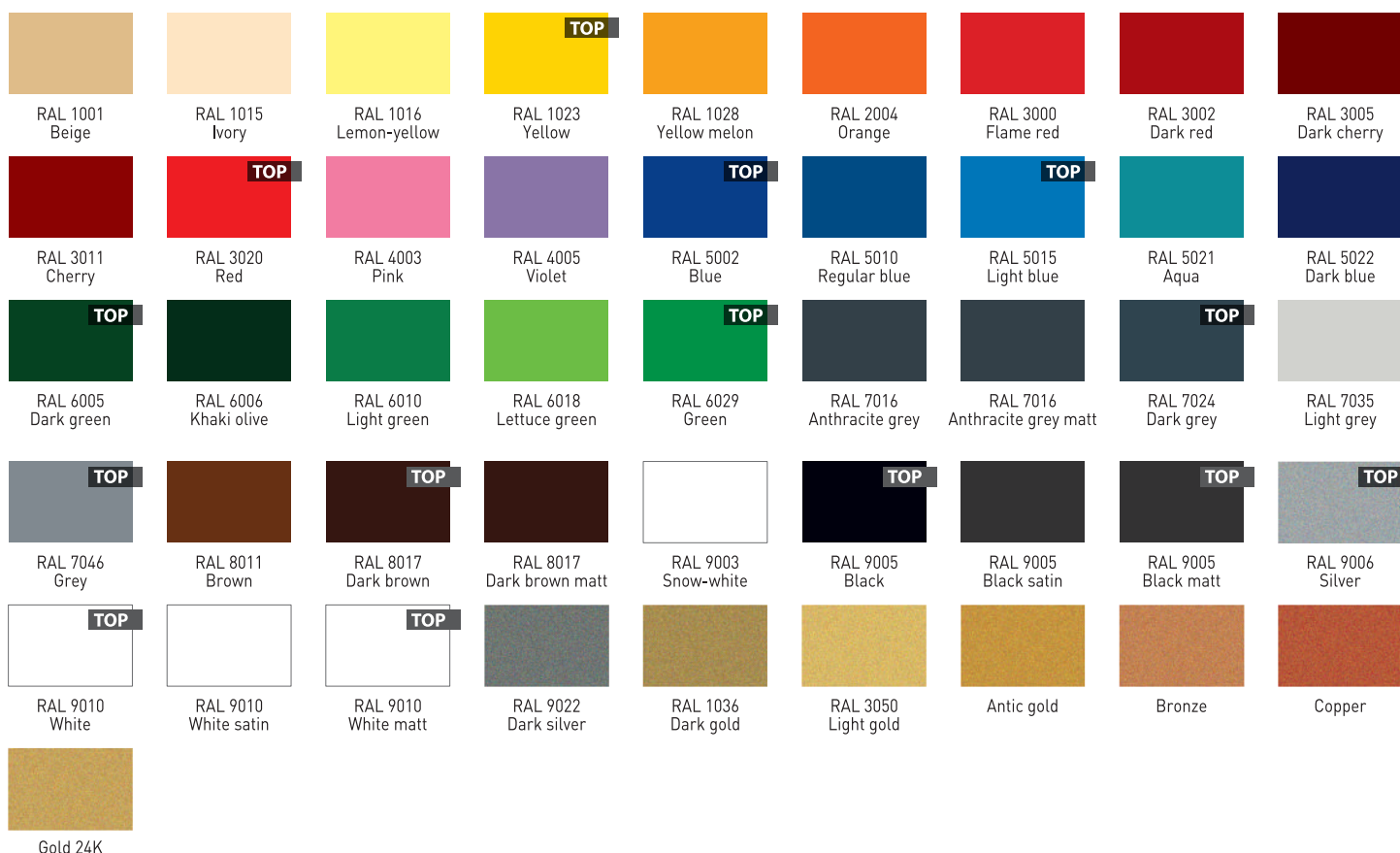
### Surfaces

Metal, concrete, plasterboard, timber, glass, paper etc.

### Peculiarities

BIODUR Universal line offers both glossy colors (gloss rank up to 95%) and matte colors that has nice velvet effect.

**VOLUME:**  
**400 ml**



## BIODUR UNIVERSAL LACQUER



### Application

Used for protection of paint coats from mechanic and weather exposure. Makes a strong transparent gloss or matte coat. The unique property of the lacquer is to enrich any color. For indoor and outdoor use.

### Advantages

Increase durability of the final surface at 20%. Does not fade out in the sunlight.

### Chemical base

Acrylic lacquer.

### Spreading capacity

1,0 – 1,5 m<sup>2</sup>.

### Drying time

7-10 min at 25°C.

### Surfaces

Metal, concrete, plasterboard, timber, glass, paper etc.

### Peculiarities

Can be applied as finish coating or independently. To obtain nice smooth effect lacquer has to be applied not later than 30 min. after last enamel layer was applied.

**VOLUME:**  
**400 ml**



Gloss



Matt

## BIODUR PRIMER UNIVERSAL



### Application

Used for various surface preparation. For indoor and outdoor use.

### Advantages

Smooths the surface, fill cavities and gaps, increase adhesion, reduces paint consumption on 30%, protecting the metal from corrosion.

### Chemical base

Alkyd primer.

### Spreading capacity

1.5-2.0 m<sup>2</sup>.

### Drying time

10-15 min at t 25°C.



White



Grey



Red



Black

### Surfaces

Used before painting metal, timber, concrete, plasterboard and other surfaces.

### Peculiarities

Various colors allows to choose the most suitable option for future painting.

**VOLUME:**  
**400 ml**

## BIODUR HEAT-RESISTANT ENAMEL



### Application

Used for decorative coating and anti-rust protection of metal surfaces that exposed high temperatures influences. For indoor and outdoor use. Primer coat and lacquer must not be applied as it can not resist high temperatures.

### Advantages

Withstands temperatures up to +600°C (depending on enamel color)

### Chemical base

High quality elastic enamel based on silicon organic resins.

### Spreading capacity

1,2-2,0 m<sup>2</sup>.

### Drying time

7-10 min at temperature +25°C.



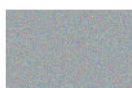
Black



White



Gold



Silver



Red

### Surfaces

Ovens, boilers, fireplaces, cauldrons, radiators, supports, engines, exhaust pipes, and industrial equipment.

### Peculiarities

The enamel gains its properties after the first heating to +180-200°C within 15 min. Before this the enamel might peel off. For the black and the silver one the short-term heating temperature (up to 4 hours) +600°C, the long-term heating temperature +400°C. For the other colors the short-term heating temperature +400°C, the long term 200°C.

**VOLUME:**  
**400 ml**

## BIODUR SUPER CHROME ENAMEL



### Application

Used for restoration and decorative painting of products made from metal, timber, glass, ceramics, some kinds of plastic. Makes decorative coating that has "mirror" gloss effect. For indoor use ONLY.

### Advantages

High reflective properties due to the "mirror" chrome effect.

### Chemical base

Acrylic enamel

### Spreading capacity

2,0-2,5 m<sup>2</sup>.

### Drying time

7-10 min at t +25°C.



Gold



Silver

### Surfaces

Widely used for painting pieces of art and furnishings: picture frames, emblems, cups, parts of light units, statues, candle sticks, icons.

### Peculiarities

Used for decoration indoor surfaces.

**VOLUME:**  
**400 ml**

## BIODUR FLUORESCENT ENAMEL



### Application

Used for advert signs, street signs, different kinds of marking. Can also be used for bright household, club, bar design. For indoor and outdoor use.

### Advantages

Highly bright colors. Possible to receive matte or gloss effect applying needed lacquer.

### Chemical base

Acrylic enamel

### Spreading capacity

1,0–1,2 m<sup>2</sup>.

### Drying time

7–10 min at t +25°C.



RAL 0096  
Pink



RAL 1026  
Yellow



RAL 3024  
Orange



RAL 3026  
Red



RAL 5016  
Blue



RAL 9015  
Green

### Surfaces

Metal, concrete, plasterboard, timber, glass, paper and other surfaces covered with white primer.

### Peculiarities

Does not recommended to use on a surfaces that exposed direct sunlight. Does not glow in the dark and does not reflect light.

**VOLUME:**  
**400 ml**

## BIODUR ZINC PRIMER



### Application

Used for anti-rust protection all types of metal and welds. For indoor and outdoor use.

### Advantages

3 in 1 primer – protecting against rust, priming, has decorative effect, petrol-oil-solvent- salt solution resistant. Has high adhesion rate to non-ferrous metals. Withstands temperatures up to +400°C.

### Chemical base

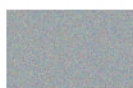
Epoxy ester prime, 98% fine zinc.

### Spreading capacity

1,5–2,0 m<sup>2</sup>.

### Drying time

10–15 min at t +25°C.



Zinc

### Surfaces

Metal constructions, pipes, wrought pieces, hydro technical constructions, pumping and tank equipment, automobile, sea and river transport.

### Peculiarities

Used as primer for paints or independently. If subsequent staining is necessary enamel has to be applied not later than 30 min after priming.

**VOLUME:**  
**400 ml**

## BIODUR ALUMINUM-ZINC ENAMEL



### Application

Used for anti-corrosion treatment of galvanized surfaces, products made of steel, aluminum, ferrous and non-ferrous metals. Enamel with high content of zinc and aluminum powder. For indoor and outdoor use.

### Advantages

Creates a strong protective coating in places of fixing, welding, drilling, cutting. Forms a strong glossy coating, resistant to atmospheric and mechanical influences, oils, saline solutions, temperature fluctuations. Withstands temperature from +250°C (constant effect) to +350°C (not more than 2 hours).

### Chemical base

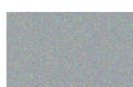
Acrylic resin with silicon compounds

### Spreading capacity

1,3 – 1,7 m<sup>2</sup>.

### Drying time

10–15 min at t +25°C.



Alu-Zinc

### Surfaces

Roof repair, galvanized profile, drains, drainage, fences, ventilation systems, air conditioning and pipelines, car body restoration and exhaust system.

### Peculiarities

Provide with long cathode protection against rust. Guarantees high electrical conductivity.

**VOLUME:**  
**400 ml**



## BIODUR ALUMINUM ENAMEL



### Application

Used for protection, restoration, decorative painting. Protects metal from corrosion. Contains finely divided aluminum of high purification (99.5%). For indoor and outdoor use.

### Advantages

Forms a strong, glossy coating with an aluminum luster, resistant to gasoline, oils, saline solutions, to abrasion, temperature fluctuations, mechanical and atmospheric influences. Withstands temperatures from +300°C (constant exposure) to +500°C (up to 2 hours).

### Chemical base

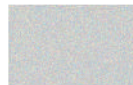
Acrylic resin with silicon compounds.

### Spreading capacity

1,3 – 1,7 m<sup>2</sup>.

### Drying time

10-15 min at t +25°C.



Aluminium

### Surfaces

Metal, wood, glass, brick, concrete, plastic, etc.

### Peculiarities

Can be used for decorative works, modeling, hobbies, staining of products from ferrous and nonferrous metals - climatic systems, chimneys, fireplaces, boilers, radiators, tanks, drying ovens, fences, elements of car exhaust systems.

**VOLUME:**  
**400 ml**

## BIODUR ENAMEL FOR CERAMICS



### Application

Used for restoration and painting, decoration, refurbishing various objects made from from faïence and ceramics. For indoor and outdoor use.

### Advantages

Withstands temperatures up to +100°C. Resistant to washing substances and temperature changes.

### Chemical base

Alkyd enamel.

### Spreading capacity

1,2-1,5 m<sup>2</sup>.

### Drying time

6 hours at +25°C.



White

### Surfaces

Bath tubs (including acrylic), wash basins, sinks, bidets, toilets, shower cubicles, ceramic tiles and other products from faïence and ceramics.

### Peculiarities

Do not prime the surface. Do not apply lacquer on the enamel. The surface will be ready to usage after 48 hours.

**VOLUME:**  
**400 ml**

## BIODUR ENAMEL FOR DOMESTIC APPLIANCES (AGD)



### Application

Used for restoration and painting the outsides of domestic appliances. For indoor and outdoor use.

### Advantages

Withstands temperatures up to +100°C. Resistant to washing substances and temperature changes.

### Chemical base

Alkyd enamel.

### Spreading capacity

1,2-1,5 m<sup>2</sup>.

### Drying time

6 hours at +25°C.



White

### Surfaces

Fridges, freezers, washing machines, drying drums, microwave ovens, air extractors etc.

### Peculiarities

For safety reasons, it is forbidden to paint the inside of the appliance. No priming required.

**VOLUME:**  
**400 ml**

## BIODUR FOREST MARKING SPRAY



### Application

Used by professionals, special fluorescent paint for marking the forest, inscriptions, numbering of trees, ground, stones and mineral soils.

### Advantages

A special self-cleaning valve «360°» allows to apply the paint horizontally and vertically and at any angle for convenient work. The paint is sprayed from the can completely. After the end of work there is no need to turn over and purge out the can

### Chemical base

Acrylic enamel



Pink



Yellow



Orange



Red



Green

### Surfaces

forest marking, sorting and processing of timber, for marking on power lines and pipelines, in geodesy and topography, for marking of hiking trails and routes, for marking sports grounds, in construction and landscape design, in quarries and mines.

**VOLUME:**  
**500 ml**

## BIODUR CONSTRUCTION MARKING SPRAY



### Application

Used for signal marking on a construction fields, during repairing and road construction, heavy machinery installation, tunnels and quarries. Perfect for geodesic and archeology.

### Advantages

Fluorescent marking highly visible even in a low light places. Resistant to weather and temperatures impact. Has perfect adhesion to wet surfaces.

### Chemical base

Acrylic resin



Pink



Yellow



Red

### Surfaces

Asphalt, concrete, bricks, clay, grass, stones, wood, metal, plaster, etc.

### Peculiarities

360 valve allows to apply marking at any angle to any surface, easy to work,

**VOLUME:**  
**500 ml**

## BIODUR ACRYLIC ENAMEL



### Application

Used for refurbishing, painting, restoration of car paintwork. For indoor and outdoor use.

### Advantages

It has high resistance to ultraviolet, temperature changes and mechanical impact.

### Chemical base

Automotive acrylic enamel.

### Spreading capacity

2,3-3,0 m<sup>2</sup>.

### Drying time

7-10 min. at a t +25°C.



RAL 9005  
Black gloss



RAL 9005  
Black matt



RAL 9010  
White

### Surfaces

Car, motorcycle, scooter, bicycle, snowmobiles, agricultural equipment, water transport (above waterline)

### Peculiarities

Can be used to paint any metal, glass, wood, concrete and other surfaces.

**VOLUME:**  
**500 ml**

## BIODUR ACRYLIC LACQUER



### Application

Used for refurbishing, painting, restoration of car paintwork. For indoor and outdoor use.

### Advantages

Increase final paintwork durability at 25%, enhances the depth of any color. It does not fade in the sun, does not lose its luster. Provides super gloss and protects from the abrasive action of sand, stone blows, the carrozion effect of water and salt solutions.

### Chemical base

Automotive acrylic lacquer.

### Spreading capacity

2,0-2,5 m<sup>2</sup>.

### Drying time

7-10 min. at a t +25°C.



Gloss

### Surfaces

Car, motorcycle, scooter, bicycle, snowmobiles, agricultural equipment and other automotive objects.

### Peculiarities

Can be used to paint any metal, glass, wood, concrete and other surfaces.

**VOLUME:**  
**500 ml**

## BIODUR ACRYLIC PRIMER



### Application

Used for the preparation and restoration of car paintwork. For indoor and outdoor use.

### Advantages

It has high resistance to temperature changes and mechanical impact. Protects metal from corrosion. Reduces paint consumption on 30%.

### Chemical base

Automotive acrylic primer.

### Spreading capacity

2,0-2,5 m<sup>2</sup>.

### Drying time

7-10 min. at a t +25°C.



Grey

### Surfaces

Car, motorcycle, scooter, bicycle, snowmobiles, agricultural equipment, water transport (above waterline)

### Peculiarities

Sanding possible in a 30 min. after priming.

**VOLUME:**  
**500 ml**

## BIODUR WHEEL PAINT



### Application

Used for refurbishing, painting, composite or steal rims restoration.

### Advantages

One can is enough for all 4 rims paintwork. High resistance to abrasive action of sand, stone blows, the carrozion effect of water and salt solutions. Makes super durable coating that contains metal pigment.

### Chemical base

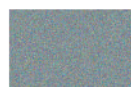
Automotive acrylic enamel with metal pigment.

### Spreading capacity

2,5-3,0 m<sup>2</sup>.

### Drying time

7-10 min. at a t +25°C.



Silver

### Surfaces

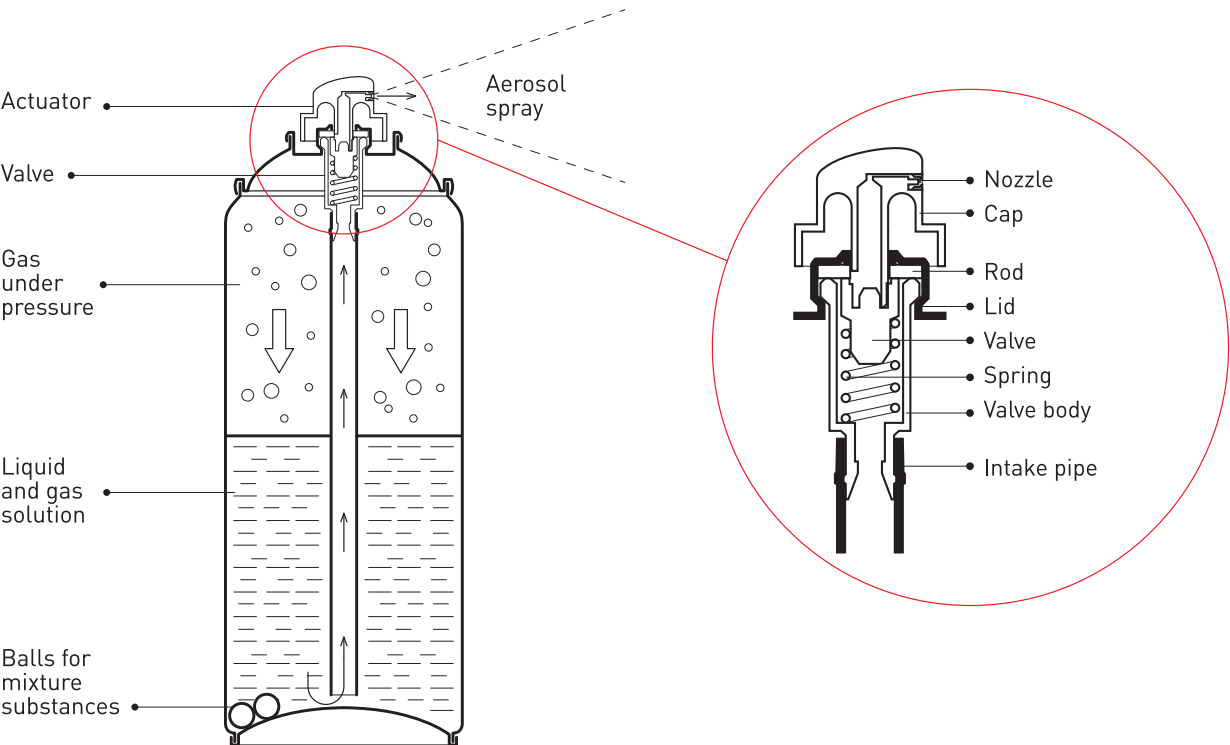
Rims of any types for cars, buses, trucks, motorcycles, etc.

### Peculiarities

To obtain maximum gloss, it is recommended to apply a transparent acrylic lacquer 30 minutes after painting.

**VOLUME:**  
**500 ml**

## HOW IT'S MADE



## SEQUENCE COATING MATERIALS

Temperature changes, weather and mechanical impact damages paintwork.  
Recommended coating sequence Primer-Enamel-Lacquer enhances durability by 3 times.

	New cover	Loss of brilliance	Change the color	The appearance of cracks and stratifications
Lacquer				
Paint				
Primer				
Surface				

### Primer

Smooths the surface, fill cavities and gaps, increase adhesion, reduces paint consumption on 30%, protecting the metal from corrosion.

20 min

### Enamel

Creates a strong coat resistant to mechanic and weather exposure. Has high adhesion rate and increased covering capacity. Does not fade out in the sunlight. Colors correspond with European classification RAL.

20 min

### Lacquer

Increase durability of the final surface at 20%. Enhances color depth. Does not fade out in the sunlight.

## HOW TO USE SPRAY PAINT



Prepare the surface: clean, degrease, apply primer.



Hold the can upright and apply thin layer on 25-30 cm distance.



Clean the valve, turn the can upside down and push the actuator till you see clean, noncolored gas.



Shake the can 2-3 min to mix the ingredients.



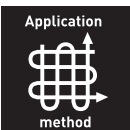
It's better to apply couple thin layers to reduce from drops.



+15 - +30°C is optimum temperature conditions for painting.



Try it on testing surface for checking.



Apply 2-3 thin layers with 3-5 min interval between layers.



Store at house temperature, keep it away from open fire and heaters. Keep away from children. Do not store or use at a temperature +50°C.

## GUIDE TO PAINTING VARIOUS SURFACES


	Iron	Nonferrous metal	Wood	Glass	Brick	Plastic	Gypsum plasterboard	Concrete	Paper, cardboard	Ceramic	Sanitary ceramic	AGD
ENAMEL UNIVERSAL	✓	✓	✓	✓	✓	✓	✓	✓	✓	—	✓	—
LACQUER UNIVERSAL	✓	✓	✓	✓	✓	✓	✓	✓	✓	—	—	—
PRIMER UNIVERSAL	✓	✓	✓	✓	✓	✓	✓	✓	✓	—	✓	—
ZINC SPRAY	✓	✓	—	—	—	—	—	—	—	—	✓	—
ALUMINUM-ZINC ENAMEL	✓	✓	—	—	—	—	—	—	—	—	—	—
ALUMINUM NAMEL	✓	✓	✓	✓	✓	✓	✓	✓	—	—	—	—
ENAMEL SUPERCHROME	✓	✓	—	✓	—	✓	—	—	—	—	—	—
ENAMEL FLUORESCENT	✓	✓	✓	✓	✓	✓	✓	✓	✓	—	—	—
ENAMEL HEAT RESISTANT	✓	—	—	—	✓	—	—	—	—	—	—	—
ENAMEL FOR CERAMICS	—	—	—	—	—	—	—	—	—	✓	—	—
ENAMEL AGD	—	—	—	—	—	—	—	—	—	—	—	✓
FOREST MARKING SPRAY	—	—	✓	—	✓	—	—	✓	✓	—	—	—
CONSTRUCTION MARKING SPRAY	✓	✓	✓	✓	✓	✓	✓	✓	✓	—	—	—
ACRYLIC PRIMER	✓	—	✓	✓	✓	✓	✓	✓	✓	—	—	—
ACRYLIC LACQUER	✓	—	✓	✓	✓	✓	✓	✓	✓	—	—	—
ACRYLIC ENAMEL	✓	✓	✓	✓	✓	✓	✓	✓	✓	—	—	—
ACRYLIC WHEEL PAINT	✓	✓	✓	✓	✓	✓	✓	✓	✓	—	—	—

## RECOMMENDED PLACEMENT AT THE STAND

<b>SHELF №1</b>	LACQUER UNIVER Glossy	LACQUER UNIVER Mat	PRIMER UNIVER Grey	PRIMER UNIVER White	PRIMER UNIVER Black	ZINC SPRAY Zinc	ENAMEL HEAT RESIST Black	ENAMEL HEAT RESIST Silver
<b>SHELF №2</b>	ENAMEL UNIVER 9005 Glossy	ENAMEL UNIVER 9005 Glossy	ENAMEL UNIVER 9005 Mat	ENAMEL UNIVER 9005 Mat	ENAMEL UNIVER 9006 Silver	ENAMEL UNIVER 9003 Snow white	ENAMEL UNIVER 9010 Gloss	ENAMEL UNIVER 9010 Mat
<b>SHELF №3</b>	ENAMEL UNIVER 1001	ENAMEL UNIVER 1023	ENAMEL UNIVER 2004	ENAMEL UNIVER 3020	ENAMEL UNIVER 3002	ENAMEL UNIVER 3011	ENAMEL UNIVER 5015	ENAMEL UNIVER 5002
<b>SHELF №4</b>	ENAMEL UNIVER 6018	ENAMEL UNIVER 6029	ENAMEL UNIVER 6005	ENAMEL UNIVER 7024	ENAMEL UNIVER 7046	ENAMEL UNIVER 7035	ENAMEL UNIVER 8017	ENAMEL UNIVER 5010
<b>SHELF №5</b>	ENAMEL CERAMIC White	ENAMEL AGD White	ENAMEL FLUOR 1026	ENAMEL FLUOR 3024	ENAMEL UNIVER Bronze	ENAMEL UNIVER Antique gold	SUPER CHROME Silver	SUPER CHROME Gold



**BIODUR®**  
NATURAL DURABILITY

 BIODUR SP. Z.O.O.  
Krakow, Halicka street 9,  
31-036, Poland

 +38 (095) 0000 345

 [info@biodur.org](mailto:info@biodur.org)

 [www.biodur.org](http://www.biodur.org)